



Performance Report for: https://jhptemplate.com/presta/v2_perfect_beauty_164/en/

Report generated: Tue, Nov 1, 2022 9:08 PM -0700
 Test Server Location: Vancouver, Canada
 Using: Chrome (Desktop) 103.0.5060.134, Lighthouse 9.6.4

<h1>A</h1>	Performance	Structure	L. Contentful Paint	T. Blocking Time	C. Layout Shift
	95%	92%	850ms	146ms	0.08

Top Issues

IMPACT	AUDIT	
Med	Avoid an excessive DOM size <small>TBT</small>	1,853 elements
Med-Low	Serve static assets with an efficient cache policy	Potential savings of 145KB
Low	Use passive listeners to improve scrolling performance	1 event listener not passive
Low	Avoid large layout shifts <small>CLS</small>	5 elements found
Low	Properly size images	Potential savings of 118KB

Page Details



Total Page Size - 1.61MB



Total Page Requests - 51



■ HTML
 ■ JS
 ■ CSS
 ■ IMG
 ■ Video
 ■ Font
 ■ Other

How does this affect me?

Today's web user expects a fast and seamless website experience. Delivering that fast experience can result in increased visits, conversions and overall happiness.

As if you didn't need more incentive, **Google has announced that they are using page speed in their ranking algorithm.**

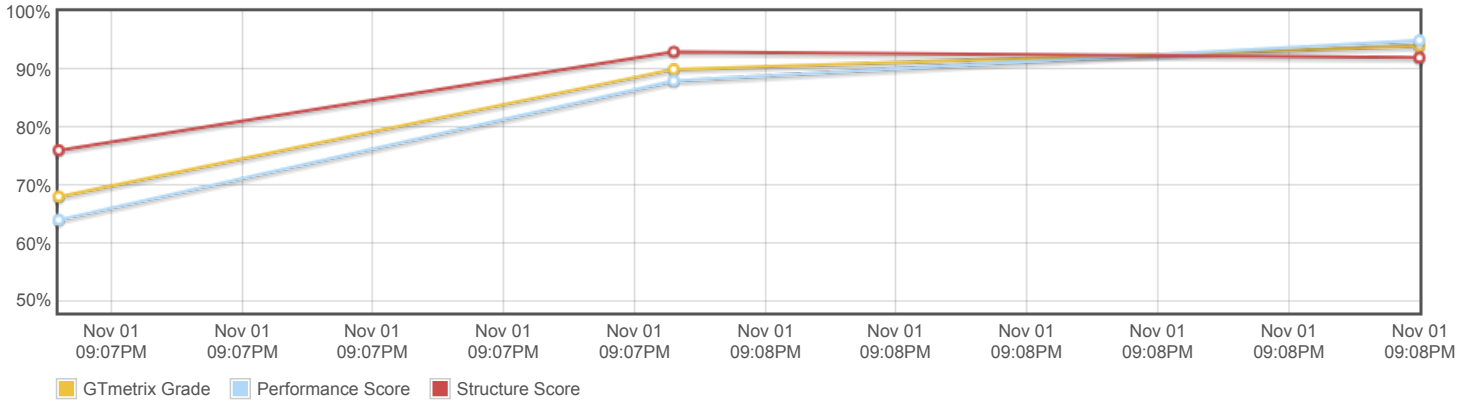
About GTmetrix



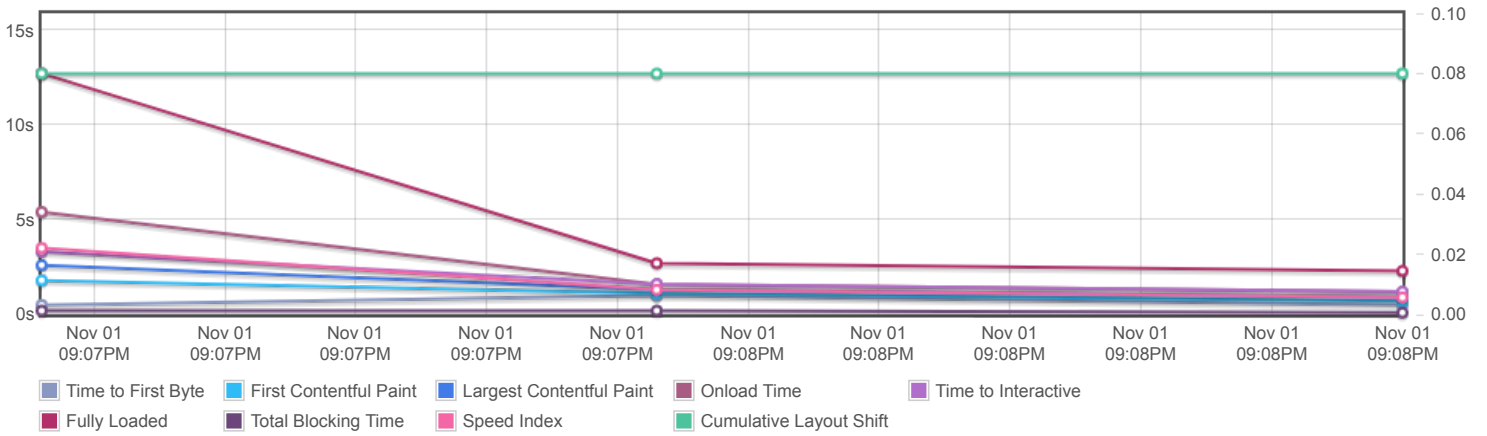
GTmetrix is developed by the good folks at Carbon60, a Canadian hosting company with over 26 years experience in web technology.

<https://carbon60.com/>

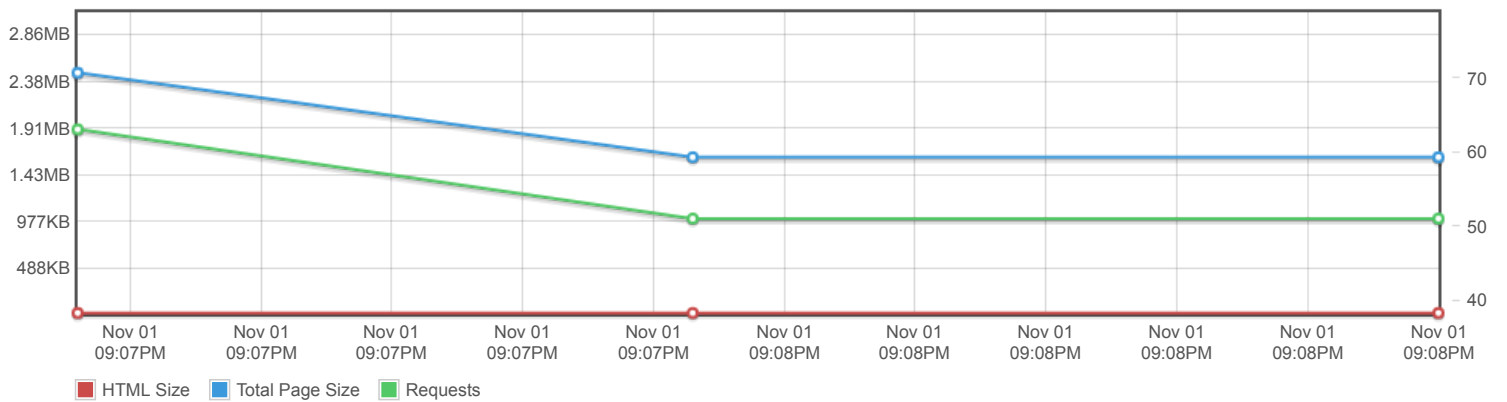
Page scores



Page metrics

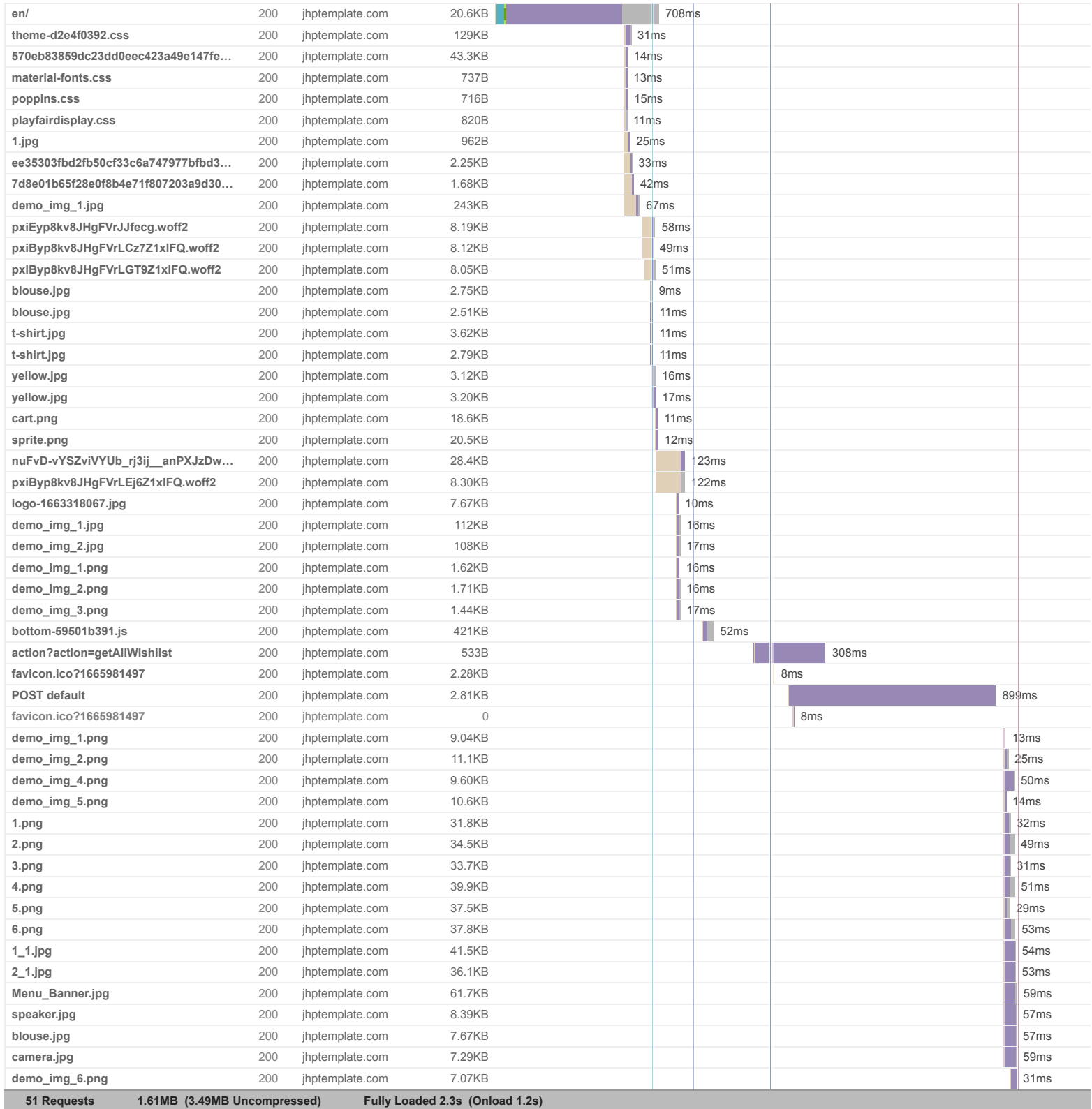


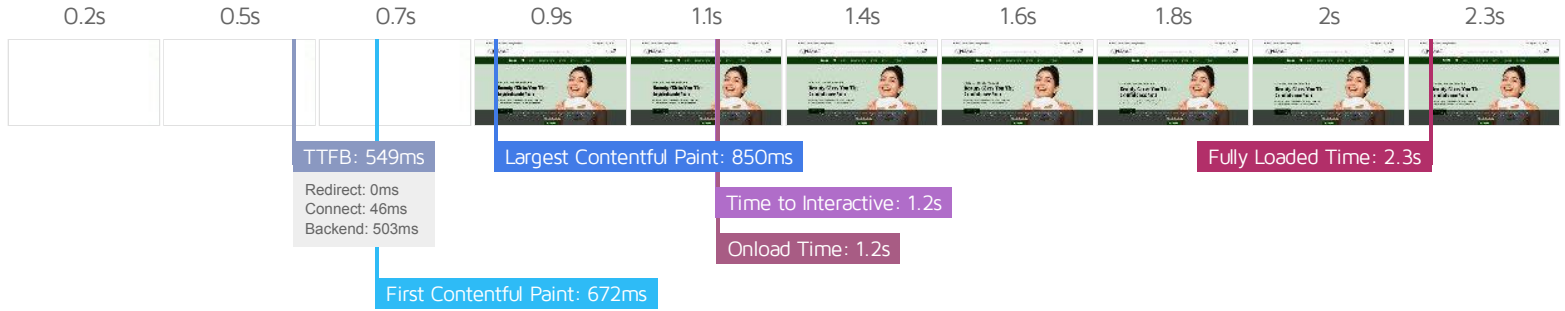
Page sizes and request counts



The waterfall chart displays the loading behaviour of your site in your selected browser. It can be used to discover simple issues such as 404's or more complex issues such as external resources blocking page rendering.

Perfect Beauty Store





Performance Metrics

<p>First Contentful Paint</p> <p>How quickly content like text or images are painted onto your page. A good user experience is 0.9s or less.</p>	<p>Good - Nothing to do here</p> <p>672ms</p>	<p>Time to Interactive</p> <p>How long it takes for your page to become fully interactive. A good user experience is 2.5s or less.</p>	<p>Good - Nothing to do here</p> <p>1.2s</p>
<p>Speed Index</p> <p>How quickly the contents of your page are visibly populated. A good user experience is 1.3s or less.</p>	<p>Good - Nothing to do here</p> <p>872ms</p>	<p>Total Blocking Time</p> <p>How much time is blocked by scripts during your page loading process. A good user experience is 150ms or less.</p>	<p>Good - Nothing to do here</p> <p>146ms</p>
<p>Largest Contentful Paint</p> <p>How long it takes for the largest element of content (e.g. a hero image) to be painted on your page. A good user experience is 1.2s or less.</p>	<p>Good - Nothing to do here</p> <p>850ms</p>	<p>Cumulative Layout Shift</p> <p>How much your page's layout shifts as it loads. A good user experience is a score of 0.1 or less.</p>	<p>Good - Nothing to do here</p> <p>0.08</p>

Browser Timings

Redirect	0ms	Connect	46ms	Backend	503ms
TTFB	549ms	First Paint	672ms	DOM Int.	1.2s
DOM Loaded	1.2s	Onload	1.2s	Fully Loaded	2.3s

IMPACT	AUDIT	
Med	Avoid an excessive DOM size <small>TBT</small>	1,853 elements
Med-Low	Serve static assets with an efficient cache policy	Potential savings of 145KB
Low	Use passive listeners to improve scrolling performance	1 event listener not passive
Low	Avoid large layout shifts <small>CLS</small>	5 elements found
Low	Properly size images	Potential savings of 118KB
Low	Efficiently encode images	Potential savings of 392KB
Low	Avoid enormous network payloads <small>LCP</small>	Total size was 1.61MB
Low	Eliminate render-blocking resources <small>FCP LCP</small>	Potential savings of 0 ms
Low	Ensure text remains visible during webfont load <small>FCP LCP</small>	1 font found
Low	Avoid long main-thread tasks <small>TBT</small>	2 long tasks found
Low	Reduce JavaScript execution time <small>TBT</small>	276ms spent executing JavaScript
Low	Reduce unused CSS <small>FCP LCP</small>	Potential savings of 118KB
Low	Serve images in next-gen formats	Potential savings of 723KB
Low	Reduce initial server response time <small>FCP LCP</small>	Root document took 502ms
Low	Avoid serving legacy JavaScript to modern browsers <small>TBT</small>	Potential savings of 98B
Low	Defer offscreen images	Potential savings of 38.2KB
Low	Avoid non-composited animations <small>CLS</small>	14 animated elements found
Low	Avoid chaining critical requests <small>FCP LCP</small>	2 chains found
Low	Reduce unused JavaScript <small>LCP</small>	Potential savings of 270KB
N/A	Largest Contentful Paint element <small>LCP</small>	1 element found
N/A	Minimize main-thread work <small>TBT</small>	Main-thread busy for 908ms
N/A	User Timing marks and measures	
N/A	Reduce the impact of third-party code <small>TBT</small>	